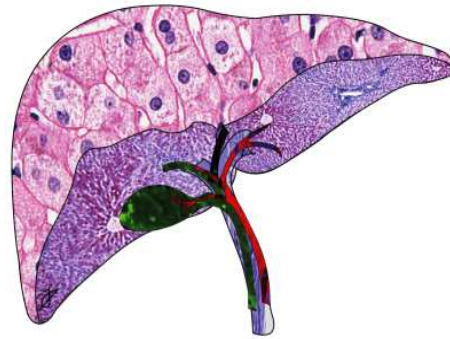


**May 10,
2019**

**University Medical
Center Groningen**



SYMPOSIUM

**Future challenges in
liver pathology**

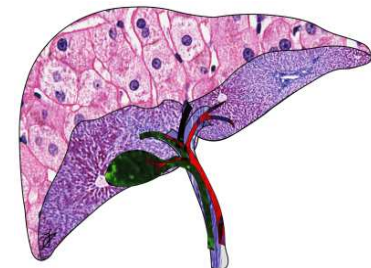
On the occasion of the retirement of



Prof. dr. Annette S.H. Gouw

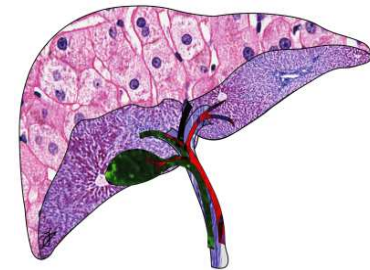
FUTURE CHALLENGES IN LIVER PATHOLOGY

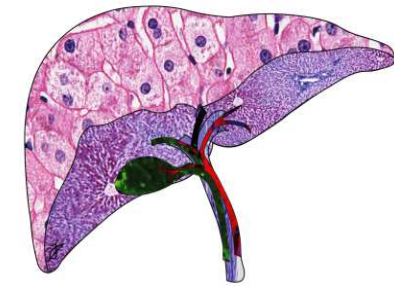
- 12:00 *Welcome & Lunch in the 'Blauwe Patio'*
- 12:30 Opening in the 'Rode Zaal'
Wim Timens, Pathology, UMCG
- 12:40 Is molecular subtyping and in-vitro testing of HPB tumor biopsies going to replace the pathologist?
Koert P. de Jong, UMCG
- 13:00 cHCC-CC, update and remaining questions on an elusive entity.
Christine Sempoux, Lausanne, Switzerland
- 13:30 The ever emerging spectrum of NASH
Elizabeth M. Brunt, St. Louis, USA
- 14.00 Clinical Hepatology in the next decade: what will we be expecting from the hepatopathologist?
Aad P. van den Berg, UMCG
- 14:20 *Tea break*



FUTURE CHALLENGES IN LIVER PATHOLOGY

- 14:50 Evaluation of liver fibrosis: Something old, something new.....
Dina Tiniakos, Athens/Newcastle, Greece/UK
- 15:20 Never a dull moment in pediatric hepatology: new advances and new challenges
Henk Jan Verkade, UMCG
- 15:40 Can we mobilize the biliary tree stemcell compartment in peribiliary glands to avoid cholangiopathy after liver transplantation?
Robert J. Porte, UMCG
- 16:00 What lies between: interstitium, fascia, and the reimagining of human anatomy.
Neil D. Theise, New York, USA
- 16:30 The changing world of liver pathology
Annette S.H. Gouw, UMCG
- 16:50 *Reception in the “Blauwe Patio”*





More information & free registration

Please contact: Annet Bouman-vd Jagt (a.van.der.jagt@umcg.nl)

Accreditation is requested for.

Location

University Medical Center Groningen, Hanzeplein 1, Groningen, The Netherlands
Symposium: Rode Zaal (2nd floor) || Reception: Blauwe Patio (1st floor)

Parking / public transport:

The University Medical Center Groningen is located to the east of Groningen city centre. Please check www.groningenbereikbaar.nl to see whether any road works are scheduled on your route. For Parking follow signs “P Noord”.

